

5395

BLACK

YELLOW

MAGENTA

CYAN

1-9655

07/03

211 X 713 NECKED IN LITHO


**CHAMPION**  
 SPRAYON®

# WASP, BEE & HORNET KILLER

Mata, Avispas, Abejas y Avispones

**REACHES NESTS UP TO  
20 FEET ABOVE GROUND**

**DIELECTRIC BREAKDOWN VOLTAGE:  
40.1 KV by ASTM Test Method D-877.**

This product can be used both indoors (attics and other places where nests are built) and outdoors on wasp, bee, hornet and yellow jacket nests.

Gives rapid knockdown and kill of wasps, bees, hornets and yellow jackets.

Gives rapid contact kill and residual kill of insects returning to the treated nest.

**ACTIVE INGREDIENTS:**

Tetramethrin [(1-Cyclohexene-1,2-dicarboximido) methyl 2,2-dimethyl-3-(2-methylpropenyl) cyclopropanecarboxylate]	0.200%
3-Phenoxybenzyl-(1RS, 3RS; 1RS, 3S R)-2,2-dimethyl-3-(2-methylprop-1-enyl) cyclopropanecarboxylate	0.125%
<b>*OTHER INGREDIENTS:</b>	99.675%
<b>Total</b>	<b>100.000%</b>

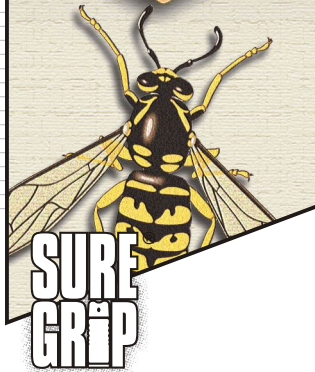
\*Contains Petroleum Distillate  
 EPA Reg. No. 498-156 EPA Est. No. 498-IL-1

**NET WT./PESO NETO 15 OZ. (425 g)**

**KEEP OUT OF REACH OF CHILDREN/MANTÉNGASE FUERA DEL ALCANCE DE LOS NIÑOS**

**CAUTION/PRECAUCIÓN**

Read precautions on back of can.



This SureGRIP® packaging is designed to spray easily, with less stress on your fingers, wrist and forearm.

**PRECAUTIONARY STATEMENTS  
HAZARDS TO HUMANS & DOMESTIC ANIMALS**

**CAUTION**

Harmful if swallowed or inhaled. Avoid breathing vapor or spray mist. Causes moderate eye irritation. Avoid contact with skin, eyes or clothing. Wash thoroughly with soap and water after handling. Remove contaminated clothing and wash clothing before reuse.

**FIRST AID**

**IF ON SKIN OR CLOTHING:** Take off contaminated clothing. Rinse skin immediately with plenty of water for 15-20 minutes. Call a poison control center or doctor for treatment advice.

**IF IN EYES:** Hold eye open and rinse slowly and gently with water for 15-20 minutes. Remove contact lenses, if present, after the first 5 minutes, then continue rinsing eye. Call a poison control center or doctor for treatment advice.

**IF SWALLOWED:** Call a poison control center or doctor immediately for treatment advice. Have person sip a glass of water if able to swallow. Do not induce vomiting unless told to do so by a poison control center or a doctor. Do not give anything by mouth to an unconscious person.

**IF INHALED:** Move person to fresh air. If person is not breathing, call 911 or an ambulance, then give artificial respiration, preferably mouth-to-mouth if possible. Call a poison control center or doctor for further treatment advice.

**NOTE TO PHYSICIAN:** Contains Petroleum Distillate. Vomiting may cause aspiration pneumonia.

Have the product container or label with you when calling a poison control center or doctor, or going for treatment.

**ENVIRONMENTAL HAZARDS**

This product is toxic to fish and other aquatic invertebrates. Do not apply directly to water. Do not contaminate water by cleaning of equipment or disposal of wastes.

**PHYSICAL OR CHEMICAL HAZARDS**

**EXTREMELY FLAMMABLE.** Contents under pressure. Keep away from heat, sparks and open flame. **DO NOT PUNCTURE OR INCINERATE CONTAINER.** Exposure to temperatures above 130°F may cause bursting.

*AUTHORIZED BY USDA FOR USE IN FEDERALLY INSPECTED MEAT AND POULTRY PLANTS*

MEDICAL EMERGENCY INFORMATION ONLY/PARA INFORMACION MEDICA DE EMERGENCIA:  
 Chem-Tel, Inc. (800) 255-3924



**Chase**  
 PRODUCTS CO.

Putting the best at your fingertips®  
 P.O. Box 70 • Maywood, IL 60153  
 www.chaseproducts.com



FEDERAL REGULATIONS  
 PROHIBIT CFC PROPELLANTS  
 IN AEROSOLS

**DIRECTIONS FOR USE**

It is a violation of Federal law to use this product in a manner inconsistent with its labeling.

Avoid contamination of food and feedstuffs. Do not use in commercial food-processing, preparation, food-storage or serving areas. In the home, all food-processing surfaces and utensils should be covered during treatment or thoroughly washed before use. Exposed food should be covered or removed.

Remove pets and birds, and cover fish aquariums before spraying.

**FOR CONTROL OF WASPS, BEES, HORNETS AND YELLOW JACKETS:**

The best time to spray the nest is in the early morning or early evening, when air temperature is cooler and most insects are in the nest and little activity is observed around the nest opening. Spray only if the air is still. Stand at a safe distance from the nest, not directly under it. Hold container upright at arm's length, point the actuator at the nest and spray in the opening of the nest first. Then spray the rest of the nest until it is saturated. Treated insects may fall out of the nest and die. Any insects returning to the nest after treatment will be killed. Wait 48 hours before removing the nest. Foliage of desirable plants that were contacted with spray should be hosed off.

**DO NOT USE THIS PRODUCT ON LIVING DECORATIVE TREES, SHRUBS OR ORNAMENTAL PLANTS.**

When using indoors and outdoors, avoid wetting asphalt tile, shingles, rubber or plastic materials. Test on an inconspicuous area before using near any other type of surface.

**STORAGE & DISPOSAL**

**STORAGE:** Store in a cool, dry area away from heat or open flame.

**DISPOSAL:** DO NOT PUNCTURE OR INCINERATE!

**If empty:** Place in trash or offer for recycling if available.

**If partly filled:** Call your local solid waste agency or 1-800-CLEANUP for disposal instructions.

**KEEP OUT OF REACH OF CHILDREN  
 MANTÉNGASE FUERA DEL ALCANCE DE LOS NIÑOS**

**THE USER OF THIS PRODUCT ASSUMES ALL RISKS OF USE, STORAGE AND HANDLING NOT IN ACCORDANCE WITH ITS DIRECTIONS AND CAUTIONS.**

¡AVISO IMPORTANTE! Si usted no sabe como usar este producto, pida ayuda de su supervisor.

1-9655



0 10228 35108 2