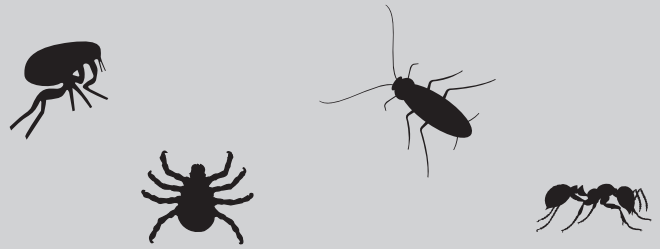


# Precor<sup>®</sup> 2000<sup>™</sup>

**PLUS**  
PREMISE SPRAY



**TREATS 2000 SQUARE FEET**  
**CONTAINS PRECOR<sup>®</sup> INSECT GROWTH REGULATOR PLUS ADULTICIDES**  
**CONTROLS FLEAS, TICKS, ANTS, COCKROACHES**  
**FAST-ACTING FORMULA**  
**PREVENTS REINFESTATION AND FLEA BUILD-UP FOR 210 DAYS**

## SPECIMEN LABEL

### ACTIVE INGREDIENTS:

(S)-Methoprene (CAS #65733-16-6) . . . . .	0.085%
Permethrin (CAS #52645-53-1) . . . . .	0.350%
Phenothrin (CAS #26002-80-2) . . . . .	0.300%
N-octyl bicycloheptene dicarboximide (CAS #113-48-4) . . . . .	2.000%
Piperonyl butoxide (CAS #51-03-6) . . . . .	1.400%
<b>OTHER INGREDIENTS*:</b> . . . . .	95.865%
TOTAL: . . . . .	100.000%

\*Contains petroleum distillates  
EPA Reg. No. 2724-490

**KEEP OUT OF REACH OF CHILDREN**  
**CAUTION**  
**SEE ADDITIONAL PRECAUTIONARY STATEMENTS**

### PRECAUTIONARY STATEMENTS HAZARDS TO HUMANS AND DOMESTIC ANIMALS – CAUTION

Avoid contact with skin or clothing. Wash thoroughly with soap and water after handling. Prolonged or frequently repeated skin contact may cause allergic reactions in some individuals.

#### FIRST AID

**IF ON SKIN OR CLOTHING** • Take off contaminated clothing. • Rinse skin immediately with plenty of water for 15-20 minutes. • Call a poison control center or doctor for treatment advice.

**IF SWALLOWED** • Call a poison control center or doctor immediately for treatment advice. • Do not induce vomiting unless told to do so by a poison

control center or doctor. • Do not give **ANY** liquid to the person. • Do not give anything by mouth to an unconscious person

**In case of emergency, call 1-800-248-7763 or a poison control center.** Have the product container or label with you when calling a poison control center or doctor or going for treatment.

**NOTE TO PHYSICIAN/VETERINARIAN:** Contains petroleum distillates – vomiting may cause aspiration pneumonia.

### DIRECTIONS FOR USE

It is a violation of Federal Law to use this product in a manner inconsistent with its labeling.

Precor<sup>®</sup> 2000<sup>™</sup> Plus kills adult fleas, hatching flea eggs and ticks, cockroaches, and ants. PRECOR<sup>®</sup>, the unique ingredient in Precor 2000 Plus provides 210 days' protection by preventing eggs from ever developing into biting fleas. For best results, use Precor 2000 Plus with Petcor<sup>®</sup> on-animal products for complete control of fleas and ticks.

**READ ENTIRE LABEL BEFORE USE.**  
**NOT FOR USE ON HUMANS OR PETS.**

**SHAKE WELL BEFORE USING.**

### FOR USE IN THE HOME/GARAGE/KENNEL

1. **Identify treatment areas**, especially those where pets frequent, such as in and around pet's sleeping and resting areas. These are the primary areas where fleas, their eggs, and ticks are found. Before treatment, a test application should be made to upholstery, drapery, light-colored, delicate fabrics, or wood surfaces in an inconspicuous place.

2. **Prepare treatment areas.** All food processing surfaces and utensils should be covered during treatment or thoroughly washed after product use. Exposed food should be covered or removed. Remove pets, and cover and unplug aquariums before spraying. Remove motor vehicles before using in garages. For best results with Surface/Carpet treatments, vacuum thoroughly before spraying and discard vacuum bag in outside trash. This product may also be used for infested surfaces inside motor vehicles.
3. **Apply treatment.** For flea/tick infestations, a single can treats 2000 square feet. Hold container upside down 2-3 feet from surface, point actuator towards the surface and push button. Using a sweeping motion, apply a light uniform spray to all surfaces of furniture, rugs, carpets, drapes, and around all pet resting areas. Avoid thoroughly wetting surfaces. Mist treated areas only until "slightly damp". Do not over-treat. Reapply in 14 days, if necessary. **IMPORTANT:** Only complete and proper application to carpets, upholstery, drapes, and other fabrics will provide thorough flea/tick elimination. Keep children and pets out of areas during treatment. Vacate room after treatment, and ventilate until surfaces are dry before reoccupying.
4. For best results, eliminate fleas/ticks on pets with appropriate Petcor on-animal products.

## FOR COCKROACHES

Spray into hiding places such as cracks, crevices, behind sinks, cabinets, along baseboards and floors, around drains and plumbing, hitting insects with spray whenever possible.

## FOR ANTS

Spray trails, nests, and points of entry. Spray on ants where possible.

## PHYSICAL OR CHEMICAL HAZARDS

Contents under pressure. Do not use or store near heat or open flame. Do not puncture or incinerate container. Exposure to temperatures above 130° F may cause bursting.

## STORAGE AND DISPOSAL

### STORAGE

Store in a cool dry area. Do not transport or store below 32° F.

### DISPOSAL

Do Not Puncture or Incinerate! **If empty:** Place in trash or offer for recycling if available. **If partly filled:** Call your local solid waste agency or 1-800-CLEANUP for disposal instructions.

Seller makes no warranty, expressed or implied, concerning the use of this product other than indicated on the label. Buyer assumes all risk of use and handling of this material when such use and handling are contrary to label instructions.

For information or in case of emergency, call 1-800-248-7763 or visit our Web Site:

**www.zoecon.com**

**Wellmark**

Wellmark International  
Schaumburg, Illinois U.S.A.

**ZOËCON**  
Professional  
Products