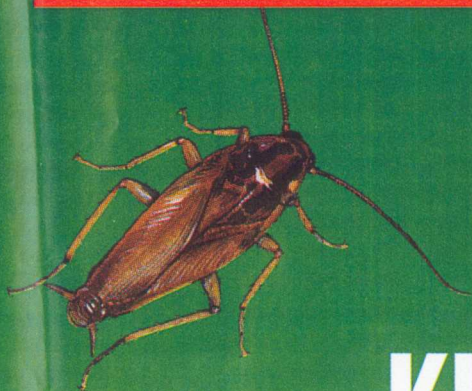


Concern[®]

From the Earth, For the Earth[®]

**DIATOMACEOUS EARTH
CRAWLING INSECT KILLER**



**KILLS
COCKROACHES, ANTS, FLEAS,
SILVERFISH & EARWIGS**

ACTIVE INGREDIENTS:

Silicon dioxide, from diatomaceous earth	85.0%
Other elemental oxides	10.0%
Moisture	5.0%
TOTAL 100.0%	

Keep out of reach of children

CAUTION See back panel for additional
precautionary statements

NET WT. 4 LBS. (1.8 kg)

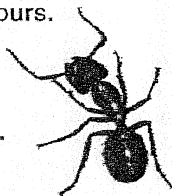


Concern®

From the Earth, For the Earth®

DIATOMACEOUS EARTH CRAWLING INSECT KILLER

Concern® Diatomaceous Earth Crawling Insect Killer is effective and long lasting when kept dry. Concern® Diatomaceous Earth Crawling Insect Killer is a mechanical insect killer. Insects cannot become immune to its action. Insects come in contact or ingest this powder and die within 48 hours.



PRECAUTIONARY STATEMENTS

HAZARDS TO HUMANS AND DOMESTIC ANIMALS

CAUTION: Causes moderate eye irritation.

Avoid contact with eyes. Use adequate ventilation and avoid breathing dust. Wear a suitable dust mask when using this product during prolonged exposure.

STATEMENT OF PRACTICAL TREATMENT

If In Eyes: Flush eyes with plenty of water. Call a physician if irritation persists.

STORAGE AND DISPOSAL

STORAGE: Store in a cool dry area.

DISPOSAL: When empty, close container and discard in trash. Partially filled container may be disposed of by wrapping in several layers of newspaper and discarding in trash.

Buyer assumes all responsibility for safety and use not in accordance with directions.

EPA Reg. No. 73729-1-50932

Ⓔ

Ⓓ

EPA Est. No. 34704-NB-1 069208-MO-001

Match circled letter with first letter of lot number on this package.

8A97064

DIRECTIONS FOR USE

It is a violation of Federal Law to use this product in a manner inconsistent with its labeling.

INDOOR USE

Earwigs, Millipedes, Centipedes, Silverfish, Cockroaches,

Ants: Lightly coat a thin layer of Concern® Diatomaceous Earth Crawling Insect Killer in areas where these pests are found or may hide, such as cracks and crevices, behind and beneath refrigerators, cabinets, stoves, garbage cans, and in and around sewer pipes and drains, window frames, and in attics and basements. Dust insects directly if possible. Repeat treatment regularly.

Fleas: Thoroughly treat floor and bedding in and around pets' sleeping quarters. Treat surrounding cracks and crevices, baseboards, carpeting, and wherever fleas are suspected.

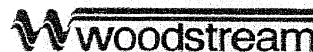
Carpet Beetles: Dust along baseboards, carpet edges, under carpeting, furniture, in closets and shelving where these insects are seen or suspected.

OUTDOOR USE

Ants, Cockroaches, Earwigs, and other Crawling Insects:

Lightly coat a thin layer of Concern® Diatomaceous Earth Crawling Insect Killer in areas where these insect pests are found such as patios, window and door frames and outdoor sills. Dust around foundations, along ant trails, and around sewer pipes and drains. Repeat treatment as necessary.

Distributed By:

 woodstream

69 N. Locust St.
Lititz, PA 17543
(800) 800-1819
(717) 626-2125
www.victorpest.com

