

66 x 218 DSC CAN

BLACK	185
CYAN	2597
MAGENTA	530
YELLOW	Cool Gray 6



MULTI-PURPOSE INSECT & LICE KILLER

Insecticida Multi-Usos y Mata Pijos

- Seeks out bugs where they hide
- Kills on contact
- Protects for up to 12 weeks against ants, cockroaches and houseflies
- Kills lice and their eggs
- For use on bedding, furniture and other inanimate objects infested with lice
- Nonstaining • No unpleasant odor
- Water-based formula

ACTIVE INGREDIENTS:

Pyrethrins.....	0.20%
*Piperonyl butoxide, technical.....	1.00%
**Permethrin.....	0.40%
OTHER INGREDIENTS:.....	98.40%
Total.....	100.00%

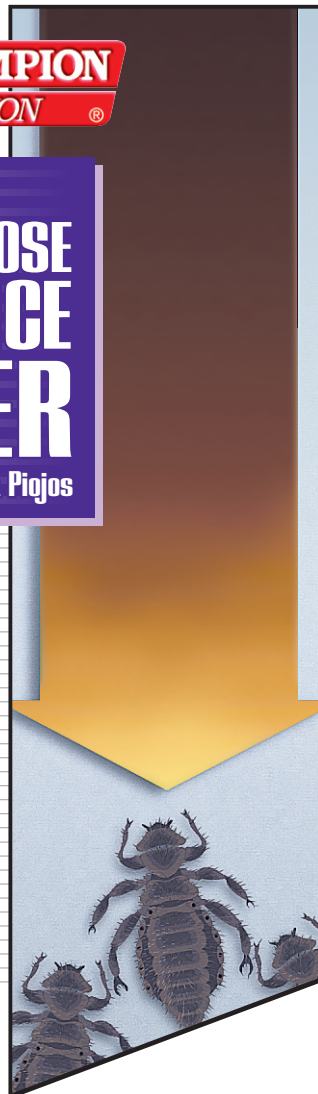
*Equivalent to min. 0.8% (butylcarbitol)(6-propylpiperonyl) ether and 0.2% related compounds.
 ** (3-Phenoxyphenyl) methyl (+/-) cis/trans 3-(2,2-dichloroethoxy) 2,2-dimethylcyclopropanecarboxylate.
 Cis/trans ratio: min. 35% (+/-) cis and max. 65% (+/-) trans.

EPA Reg. No. 498-174 EPA Est. No. 498-IL-1

NET WT./PESO NETO 10 OZ. (283 g)

KEEP OUT OF REACH OF CHILDREN MANTENGASE FUERA DEL ALCANCE DE LOS NIÑOS CAUTION PRECAUCION

Read precautions on back of can.



PRECAUTIONARY STATEMENTS HAZARDS TO HUMANS AND DOMESTIC ANIMALS CAUTION

Harmful if inhaled. Avoid breathing vapor or spray mist. Remove contaminated clothing and wash before reuse.

FIRST AID STATEMENT

IF INHALED: Remove person to fresh air. If person is not breathing, call 911 or an ambulance, then give artificial respiration, preferably mouth-to-mouth, if possible. Call a poison control center or doctor for further treatment advice.

ENVIRONMENTAL HAZARDS

This product is toxic to fish and other aquatic organisms. Do not apply directly to any body of water. Do not contaminate water by disposal.

PHYSICAL OR CHEMICAL HAZARDS

Contents under pressure. Do not use or store near heat or open flame. DO NOT PUNCTURE OR INCINERATE CONTAINER. Exposure to temperatures above 130°F (54°C) may cause bursting.

DIRECTIONS FOR USE

It is a violation of Federal law to use this product in a manner inconsistent with its labeling. Avoid contamination of feed and foodstuffs. Remove pets and birds, and cover fish aquariums before spraying. Vacate room after treatment and ventilate before reoccupying. Do not allow children or pets to contact treated areas until surfaces are dry.

STORAGE & DISPOSAL

STORAGE: Store in a cool, dry place away from heat or open flame. Do not contaminate water, food or feed by the use, storage or disposal of this product. Avoid freezing.

DISPOSAL: DO NOT PUNCTURE OR INCINERATE!

If empty: Place in trash or offer for recycling if available.

If partly filled: Call your local solid waste agency or 1-800-CLEANUP for disposal instructions.

Do not apply directly to food.

Do not use in food/feed areas of food/feed-handling establishments, restaurants or other areas where food/feed is commercially prepared or processed. Do not use in serving areas while food is exposed or facility is in operation. Serving areas are areas where prepared foods are served, such as dining rooms, but excluding areas where foods may be prepared or held.

Nonfood areas are areas such as garbage rooms, lavatories, floor drains (to sewers), entries and vestibules, offices, locker rooms, machine rooms, boiler rooms, garages, mop closets and storage (after canning or bottling).

Commercial food/feed areas where the product cannot be used include areas for receiving, serving, storage (dry, cold, frozen, raw), packaging (cleaning, slicing, cooking, grinding), edible waste storage, enclosed processing systems (mills, dairies, edible oils, syrups).

Do not use in rooms/areas while occupied by patients, the elderly or infirm. Do not apply to classrooms when in use.

Do not use this product in or on electrical equipment due to the possibility of shock hazard.

SHAKE WELL BEFORE USING

Hold container upright and spray from a distance of 12 to 15 inches.

INDOORS

CLUSTER FLIES, HOUSEFLIES, FRUIT FLIES, MOSQUITOES, GNATS, WASPS, HORNETS, BEES, BLACKFLIES, SKIPPER FLIES, BLOWFLIES AND SMALL FLYING MOTHS: Close all doors and windows and direct spray upward into center of room with a slow, sweeping motion. Spray 5 to 10 seconds for average room, moving toward the door. Direct spray to all parts of the room, especially windows and other light sources which attract these insects. Keep nozzle in constant motion. Leave room and keep area closed for 15 minutes after spraying. Ventilate room thoroughly before reentry. Sweep up and discard fallen insects.

COCKROACHES, WATER BUGS, PALMETTO BUGS, SILVERFISH, FIREBRATS, CRICKETS, SCORPIONS, SPIDERS, MILLIPEDES, CENTIPEDES, SOW BUGS AND PILL BUGS: Spray into hiding places such as cracks and crevices, behind sinks, cabinets, along baseboards and floors, around drains and plumbing, hitting insects with spray whenever possible.

ANTS: Spray trails, nests and points of entry. Spray on ants where possible.

CARPET BEETLES: Spray directly on beetles, floors, baseboards, shelves and carpets.

BEDBUGS: Spray mattresses, particularly around tufts and seams. Take beds apart and spray into all joints. Treat baseboards, moldings and floors. Repeat treatment as necessary. Allow all sprayed articles to dry thoroughly before use.

FLEAS AND TICKS, INCLUDING TICKS WHICH MAY CAUSE LYME DISEASE (ADULTS AND LARVAE): Remove and thoroughly clean or destroy pet bedding. Spray pet sleeping quarters, bed, entire floor and floor covering, with special attention to cracks and crevices around baseboards, and window and door frames. Infested upholstered furniture and mattresses may also be treated with this product. A test application should be made to upholstery or drapery fabrics in an inconspicuous place before use.

TO KILL LOUSE EGGS AND LICE: Spray in an inconspicuous area to test for possible staining or discoloration. Inspect again after drying, then proceed to spray entire area to be treated. Hold container upright with nozzle away from you. Depress valve and spray from a distance of 8 to 10 inches. Spray each square foot for 3 seconds. Spray only those garments and parts of bedding, including mattresses and furniture, that cannot be either laundered or dry cleaned. Allow all sprayed articles to dry thoroughly before use.

OUTDOORS

Remove all exposed food and cooking utensils. Cover all food-handling surfaces or wash thoroughly after treatment and before use. Do not use on edible crops.

Point spray nozzle away from face. Hold can on slight downward angle. For best results, spray when air is calm. Allow a few minutes for product to take effect. Spray with wind if breeze is blowing.

FLYING INSECTS: FLIES, MOSQUITOES, GNATS, SMALL FLYING MOTHS, HORNETS AND YELLOW JACKETS. Allow fog to drift over area. Direct spray toward bushes or grass from at least 4 to 6 feet away. Give special attention to breeding areas such as garbage cans and compost piles.

WASP NESTS: Spray mist directly on insects and their nests from approximately 2 feet away. Contacted insects will fly away from fog. Applications should be made in late evening when insects are at rest. Spray into hiding and breeding places, contacting as many insects as possible.

CRAWLING INSECTS: ANTS, COCKROACHES, INCLUDING ASIAN COCKROACHES, CRICKETS, MOLE CRICKETS, CENTIPEDES AND SILVERFISH. Hold can two (2) to three (3) feet from surface to be treated and spray infested surface of patio or picnic area, hitting as many insects as possible. Spray to slightly moisten the surface. Also spray legs of tables and chairs to repel ants. Spray ant hills for best control.

THE USER OF THIS PRODUCT ASSUMES ALL RISKS OF USE, STORAGE AND HANDLING NOT IN ACCORDANCE WITH ITS DIRECTIONS AND CAUTIONS.

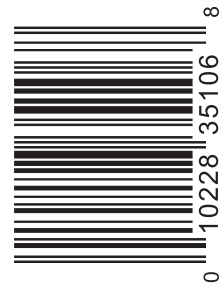
¡AVISO IMPORTANTE! Si usted no sabe como usar este producto, pida ayuda de su supervisor.

MEDICAL EMERGENCY INFORMATION ONLY/PARA INFORMACION MEDICA DE EMERGENCIA: Chem-Tel, Inc. (800) 255-3924

KEEP OUT OF REACH OF CHILDREN MANTENGASE FUERA DEL ALCANCE DE LOS NIÑOS



FEDERAL REGULATIONS
PROHIBIT CFC PROPPELLANTS
IN AEROSOLS



Chase

PRODUCTS CO.

Putting the best at your fingertips.®

P.O. Box 70 • Maywood, IL 60153

www.chaseproducts.com

1-9777 DSC